



TYPE HGO-1, SERIES B, NEMA SIZE 5, 300 AMPERE, DC CONTACTOR SINGLE POLE, NORMALLY OPEN

INSTALLATION AND ADJUSTMENT

Mount the contactor vertically on a rigid support. Provide at least 1.1" clearance above the top of the contactor base and 3.2" in front of the arc chute for arcing clearance and arc chute removal.

With the contactor power OFF, lift straight up on the arc chute (1) and remove it from the contactor. Operate the contactor by hand to see that the contact tips meet squarely. If they do not, adjust by the procedure described below in step 6 of "Contact Tip Replacement". When released, the contactor should open freely. If it does not, check for clearance around the bearing bracket (14) and the opening spring (25). Check all electrical connections to see that they are tight and replace the arc chute. No further adjustments are necessary.

CAUTION: Do not operate the contactor under load without the arc chute installed in its proper position.

TROUBLESHOOTING

PROBLEM: Contactor will not close when energized.

SOLUTION: Check the voltage at the operating coil terminals. An absence of voltage indicates a fault elsewhere in the circuitry. If the coil voltage is normal, disconnect the coil leads and check the coil for continuity. An open or shorted coil must be replaced.

REPAIR and MAINTENANCE

CONTACT TIP REPLACEMENT

To determine when the contact tips should be replaced, the contact follow up must be measured. The contact follow up is the distance "F" measured at the upper edge of the contact arm with the contactor fully closed, as shown on the right. When this distance is reduced to 1/16" or less, the contact tips must be replaced to assure that proper contact pressure is maintained.

Should it be necessary to replace the tips, a 1/2" open end wrench is the only tool needed and the following procedure should be followed:

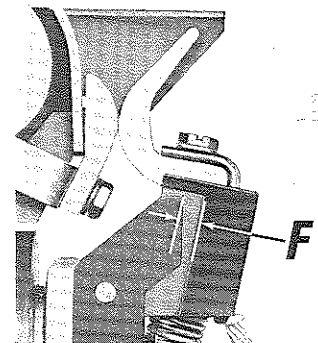
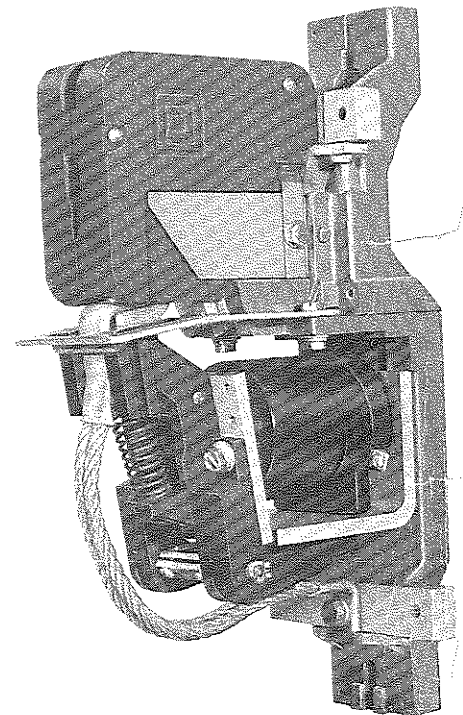
1. Remove the arc chute (1).
2. Unscrew the hex head bolt (38A) holding the flexible connector and movable contact tip in place.
3. Remove these parts and unscrew the hex head bolt (38B) holding the stationary contact tip in place.
4. Install a new stationary contact tip (36) and replace the bolt (38B)*
5. Reassemble the new movable contact tip (35) flexible connector (18), and bolt (38A)* in that order.

6. Operate the contactor by hand to see that the tips meet squarely. Contact tip alignment can be adjusted by loosening the tip retaining bolts and shifting the tips. After the contacts are properly aligned, retighten the bolts securely.
7. Replace the arc chute.

COIL REPLACEMENT

To replace the operating coil, a screwdriver and 1/2" open end wrench are needed and the following procedure should be followed:

1. Remove the arc chute.
2. Remove the coil leads.
3. Loosen the two pan head screws (20) and push the contact arm pin (19) out.
4. Remove the contact arm assembly.
5. Unscrew the hex head bolt (9) on the top of the magnet core and remove the coil.
6. Install the new coil and replace the core cap (23), the core cap spacer (22), lockwasher (8), and hex head bolt (9). Make sure the core cap (heavy steel washer) is next to the coil.



7. Replace the contactor arm assembly, contact arm pin (19) and tighten the two pan head screws (20).
8. Reconnect the coil leads to the coil and replace the arc chute.

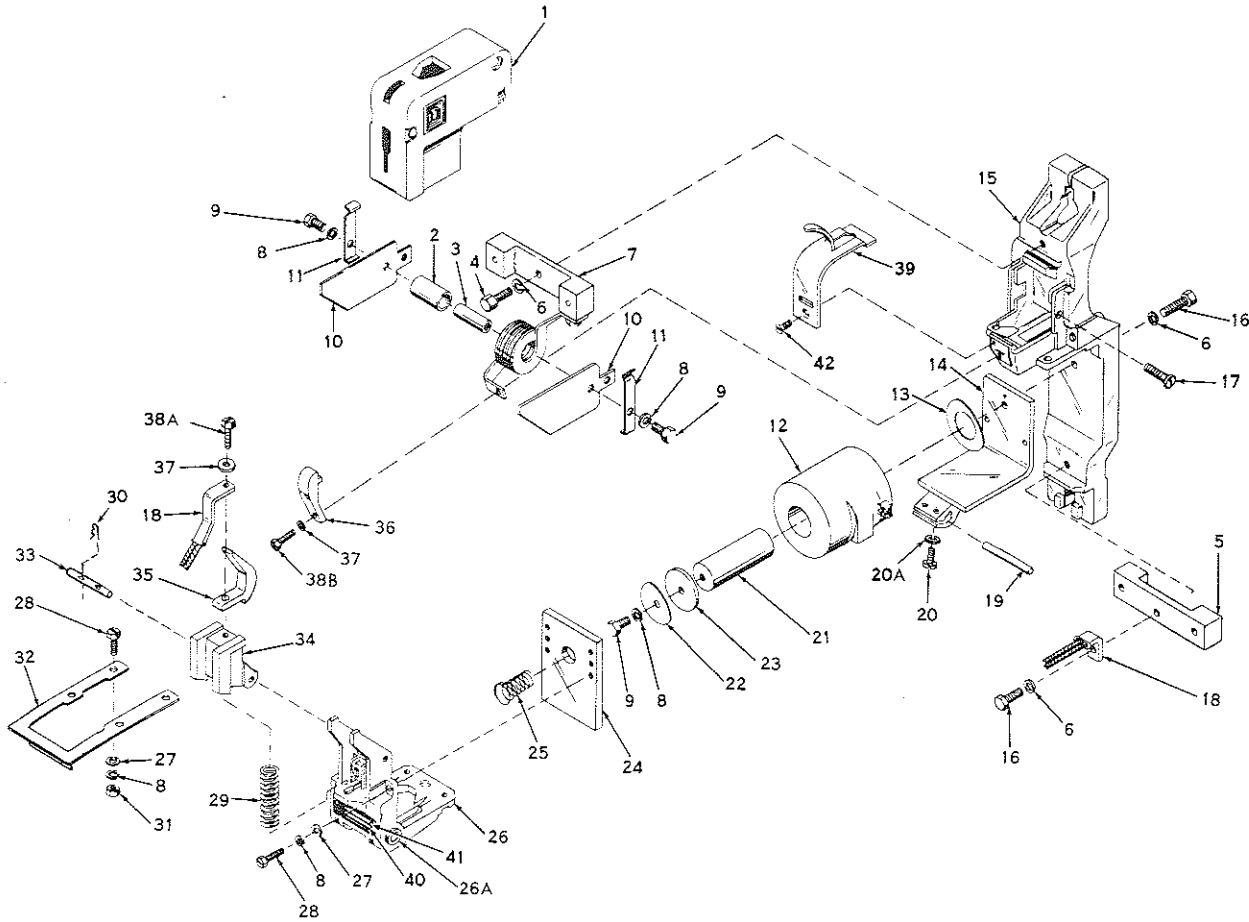
LUBRICATION

The type "H" contactor requires no lubrication. The pivot pins bear in a self-lubricating material.

NOTE: *The special non-magnetic bolts and lockwashers supplied with the contact parts kit must be used.



TYPE HGO-1, SERIES B, NEMA SIZE 5, 300 AMPERE, DC CONTACTOR, S.P., N.O.



Item No.	Part No.	Description	Item No.	Part No.	Description
1	A51019-033-50	Assembled Arc Chute	21	A51019-040-50	Assembled Coil Core
2	B50512-052-34	Blowout Core Insulator	22	✓ B50502-006-11	Core Cap Spacer
3	B50502-776-15	Blowout Core	23	✓ B50502-006-10	Core Cap
4	✓ 21401-24240	3/8" - 16 x 3/4" Steel Hex Cap Screw	24	A51019-043-01	Armature
5	A51019-029-01	Bottom Terminal Block	25	✓ B50502-602-13	Opening Spring
6	✓ 23701-00240	3/8" Plain Lock Washer, 3 Req'd.	26	B51019-103-50	Contact Arm Assembly
7	A51019-054-50	Blowout Coil & Top Terminal Block Assembly	26A	✓ A51019-134-01	Bushings, 2 Req'd.
8	✓ 23701-00220	5/16" Plain Lock Washer, 7 Req'd.	27	✓ 23601-00220	5/16" Plain Washer, 4 Req'd.
9	21401-22200	5/16" - 18 x 5/8" Steel Hex Cap Screw, 3 Req'd.	28	✓ 21408-22240	5/16" - 18 x 3/4" Slotted Steel Hex Cap Screw, 4 Req'd.
10	A51019-037-01	Blowout Ear, 2 Req'd.	29	B50502-602-12	Auxiliary Arm Spring
11	A51019-034-01	Arc Shield Spring, 2 Req'd.	30	A50502-701-01	Hairpin Clip (Aux. Arm Pin), 2 Req'd.
*12	✓ A51019-056-50	Assembled Operating Coil (240V)	31	✓ 23003-00220	5/16" - 18 Hex Jam Nut, 2 Req'd.
	✓ A51019-056-51	Assembled Operating Coil (120V)	32	A51019-053-01	Stop Plate
13	✓ A51019-041-01	Spring Washer	33	A51019-059-01	Pin (Auxiliary Arm)
14	A51019-076-50	Assembled Magnet Frame	34	✓ B51019-145-50	Auxiliary Arm
15	A51019-028-50	Assembled Contactor Base	*35		Movable Contact Tip (Copper)
16	✓ 21401-24480	3/8" - 16 x 1/2" Steel Hex Cap Screw, 2 Req'd.	*36	✓ Class 9998	Stationary Contact Tip (Copper)
17	✓ 21590-16120	#10-24 x 3/8" Pan Hd. Thr'd. Form Screw	*37	✓ Type HG-1	5/16" Si.-Br. Lock Washer, 2 Req'd.
18	✓ A51019-050-50	Assembled Connector	*38A	✓ Kit	5/16" - 18 x 1" Si.-Br. Hex Cap Screw
19	A51019-102-01	Pin (Contact Arm)	*38B		2 Req'd.
20	21201-16200	10x24x3/8" Pan Head Screws, 2 Req'd. (Incl. in Item 14)	39	A51019-033-01	Blowout Guard
20A	✓ 23701-00160	#10 Plain Steel Lock Washer, 2 Req'd.	40	A51019-176-01	Nameplate
			41	✓ 21509-12080	No. 6-32x1/4" Pan Head Screw, 2 Req'd.
			42	✓ 21201-16120	No. 10-24x3/8" Flat Head Steel Screw

NOTE: Parts Kits are Sold Only as Complete Kits and are Listed Under Class 9999 of Catalog. User Modification Kits Such as Interlocks, Tie Bars, and Timers are Listed Under Class 9998.

* Essential Parts for General Maintenance.